

Organisation Outbound Logistics	Document type Instruction		
Document name Locking/unlocking RIGHT HAND DRIVEN new XC90	Version 1	Date 2015-03-19	Page 1 (4)
Issuer (Dept., name, CDS-id) 84200, Henrik Pettersson	Reg. No. 1	Security class Proprietary	



Locking/unlocking RIGHT HAND DRIVEN new XC90

Locking RHD XC90

1. *Driver inside car, Engine running, All 5 doors closed.*
2. *Depress the locking button on the central locking control in doorpanel, see picture below.*



3. *Engage the electric parking brake(when needed)*
4. *Turn off the engine*
5. *Grab and take the complete set(blister pack and bag) with key blades and remotes out from the car*
6. *Open the driver door and step out of car*

Organisation Outbound Logistics	Document type Instruction		
Document name Locking/unlocking RIGHT HAND DRIVEN new XC90	Version 1	Date 2015-03-19	Page 2 (4)
Issuer (Dept., name, CDS-id) 84200, Henrik Pettersson	Reg. No. 1	Security class Proprietary	



7. Carefully take one of the key blades out from the plastic bag via the pre-cut circular hole.



8. Lock driver door by using the key blade, see details below



9. Insert key blade in the small lock switch hole on the end of the door
10. Press the key in until the key bottoms, approx. 12mm.
11. Put the key blade back into the plastic bag using the the pre-punched circular hole.
12. Close the door. Check that door is locked by pulling the outer door handle.

END locking

Organisation Outbound Logistics	Document type Instruction		
Document name Locking/unlocking RIGHT HAND DRIVEN new XC90	Version 1	Date 2015-03-19	Page 3 (4)
Issuer (Dept., name, CDS-id) 84200, Henrik Pettersson	Reg. No. 1	Security class Proprietary	

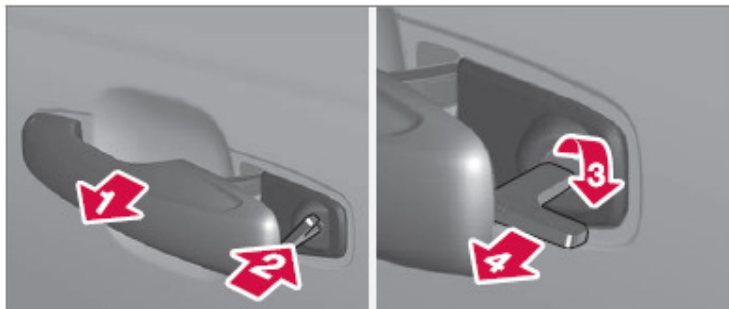


Unlocking RHD XC90

1. Carefully take one of the key blades out from the plastic bag via the pre-cut circular hole.



2. Unlock **LEFT front door** by using the key blade, see details below.



1. Pull out the front door handle on the left hand side to its end position so that the lock cylinder become visible.
 2. Insert the key blade in the lock cylinder.
 3. Turn key clockwise 45 degrees so that the key blade is pointing straight back.
 4. Turn the key back 45 degrees to its starting position. Remove the key from the lock cylinder. Pull out the handle
3. Put the key blade back into the plastic bag through the pre-cut circular hole.
 4. Open front passenger door, step in and reach over to driver door, pull handle until door unlocks. See picture below.

Organisation Outbound Logistics	Document type Instruction		
Document name Locking/unlocking RIGHT HAND DRIVEN new XC90	Version 1	Date 2015-03-19	Page 4 (4)
Issuer (Dept., name, CDS-id) 84200, Henrik Pettersson	Reg. No. 1	Security class Proprietary	



5. *Place plastic blister and bag with key blades on the front passenger seat.*
6. *Exit the car, close passenger door and walk round the car to driver side.*
7. *Open the driver door by pulling the handle.*

END unlocking