

Organisation Outbound Logistics	Document type Instruction		
Document name Locking/unlocking LEFT HAND DRIVEN new XC90	Version 1	Date 2015-03-19	Page 1 (3)
Issuer (Dept., name, CDS-id) 84200, Henrik Pettersson	Reg. No. 1	Security class Proprietary	



Locking/unlocking LEFT HAND DRIVEN new XC90

Locking LHD XC90

1. *Driver inside car, Engine running, All 5 doors closed.*
2. *Depress the locking button on the central locking control in doorpanel, see picture below. Doors are locked.*



3. *Engage the electric parking brake(when needed)*
4. *Turn off the engine*
5. *Grab and take the complete set(blister pack and bag) with key blades and remotes out from the car*
6. *Open the driver door and step out of car*

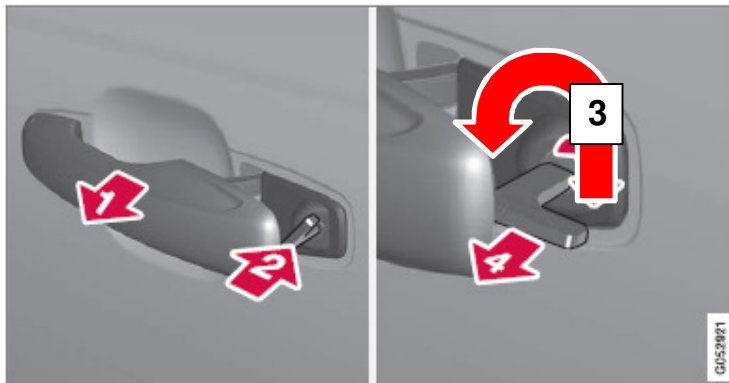
Organisation Outbound Logistics	Document type Instruction		
Document name Locking/unlocking LEFT HAND DRIVEN new XC90	Version 1	Date 2015-03-19	Page 2 (3)
Issuer (Dept., name, CDS-id) 84200, Henrik Pettersson	Reg. No. 1	Security class Proprietary	



7. Carefully take one of the key blades out from the plastic bag via the pre-cut circular hole.



8. Lock driver door by using the key blade, see details below.



1. Pull out the front door handle on the left hand side to its end position so that the lock cylinder becomes visible.
 2. Insert the key blade in the lock cylinder.
 3. Turn key counter-clockwise 45 degrees so that the key blade is pointing straight up.
 4. Turn the key back 45 degrees to its starting position. Remove the key from the lock cylinder. Close the door. Check that the door is locked by pulling the outer door handle.
 5. Put the key blade back into the plastic bag through the pre-cut circular hole.
- END locking

Organisation Outbound Logistics	Document type Instruction		
Document name Locking/unlocking LEFT HAND DRIVEN new XC90	Version 1	Date 2015-03-19	Page 3 (3)
Issuer (Dept., name, CDS-id) 84200, Henrik Pettersson	Reg. No. 1	Security class Proprietary	

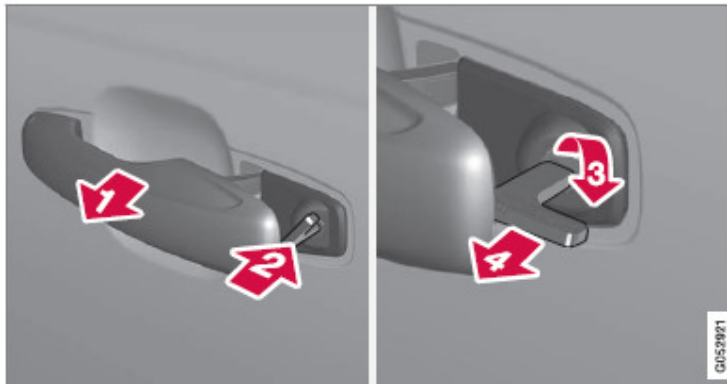


Unlocking LHD XC90

1. Carefully take one of the key blades out from the plastic bag via the pre-cut circular hole.



2. Unlock driver door by using the key blade, see details below.



1. Pull out the front door handle on the left hand side to its end position so that the lock cylinder become visible.
 2. Insert the key blade in the lock cylinder.
 3. Turn key clockwise 45 degrees so that the key blade is pointing straight back.
 4. Turn the key back 45 degrees to its starting position. Remove the key from the lock cylinder. Pull out the outer door handle
3. Put the key blade back into the plastic bag through the pre-cut circular hole.
 4. Place plastic blister and bag with key blades on the front passenger seat.
- END unlocking