



U.S. Coast Guard Sector Maryland-NCR

2401 HAWKINS POINT ROAD, BLDG 70

BALTIMORE, MD 21226-1791

MTSRecoveryMDNCR@uscg.mil

MARINE SAFETY INFORMATION BULLETIN 052-24

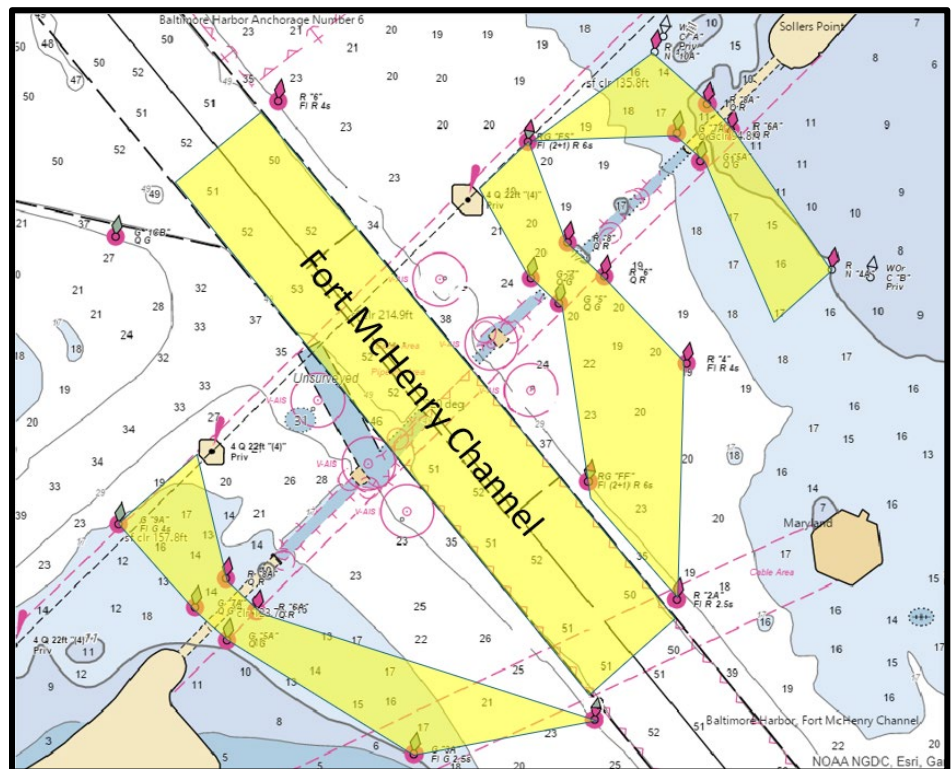
June 10, 2024

Port of Baltimore Safety Zone – Francis Scott Key Bridge Fort McHenry Channel and Temporary Alternate Channels

**** This cancels MSIB 050-24 ****

Fort McHenry Channel: The Captain of the Port (COTP) has reopened the Fort McHenry Channel to commercial vessel traffic for 24-hour availability. This channel has been fully restored to its original depth of 50 ft, 700-ft horizontal clearance, and a vertical clearance of 214 ft due to the adjacent BG&E powerlines.

Deep draft vessels still require a Maryland State Pilot and one escort tug, and the Temporary Alternate Channels remain open and available for use until approximately June 30th, the conclusion of all on water salvage and survey operations relating to the Key Bridge Response.



Temporary Alternate Channels:

Fort Carroll Temporary Alternate Channel remains open 24-hours daily to non-deep draft commercial vessels with a controlling depth of 20 ft, a 300-ft horizontal clearance, and vertical clearance of 135 ft.

Hawkins Point Temporary Alternate Channel remains open 24-hours daily to non-deep draft commercial vessels with a controlling depth of 14 ft, a 280-ft horizontal clearance, and vertical clearance of 124 ft.

Sollers Point Temporary Alternate Channel remains open 24-hours daily to all traffic, to include recreational vessels, with a controlling depth of 11 ft, a 264-ft horizontal clearance, and vertical clearance of 95 ft.

The most current U.S. Army Corps of Engineers hydrographic survey data is available on the internet at [eHydro](https://www.eHydro.gov).

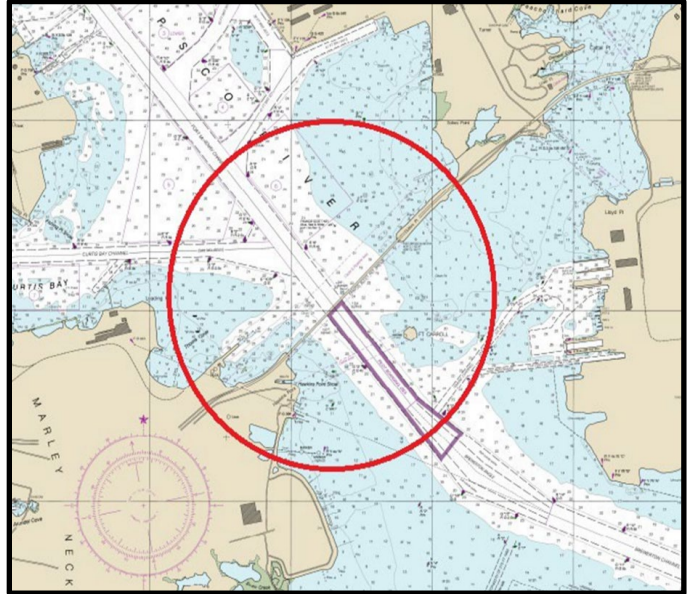
MARINE SAFETY INFORMATION BULLETIN 052-24

June 10, 2024

Port of Baltimore Safety Zone – Francis Scott Key Bridge Fort McHenry Channel and Temporary Alternate Channels

Francis Scott Key Bridge Safety Zone: The safety zone identified in [33 CFR §165.89](#) established for all navigable waters of the Chesapeake Bay within a 2,000-yard radius of the Francis Scott Key Bridge remains in effect and is intended to protect personnel, vessels, and the marine environment. Except for vessels transiting in one of the four marked channels, no vessel or person will be permitted to enter the safety zone without first obtaining permission from the Captain of the Port (COTP).

- The Maryland Pilots will continue their regular coordination of deep draft traffic and are available at (410) 342-6013.
- All vessels transiting the safety zone must remain within the marked channels and well clear of vessels engaged in salvage and safety operations.



Baxter B. Smoak

BAXTER B. SMOAK
COMMANDER, U.S. COAST GUARD
USCG SECTOR MARYLAND-NCR