



U.S. Coast Guard Sector Maryland-NCR

2401 HAWKINS POINT ROAD, BLDG 70

BALTIMORE, MD 21226-1791

MTSRecoveryMDNCR@uscg.mil

UPDATE 1 – MARINE SAFETY INFORMATION BULLETIN 052-24 – UPDATE 1

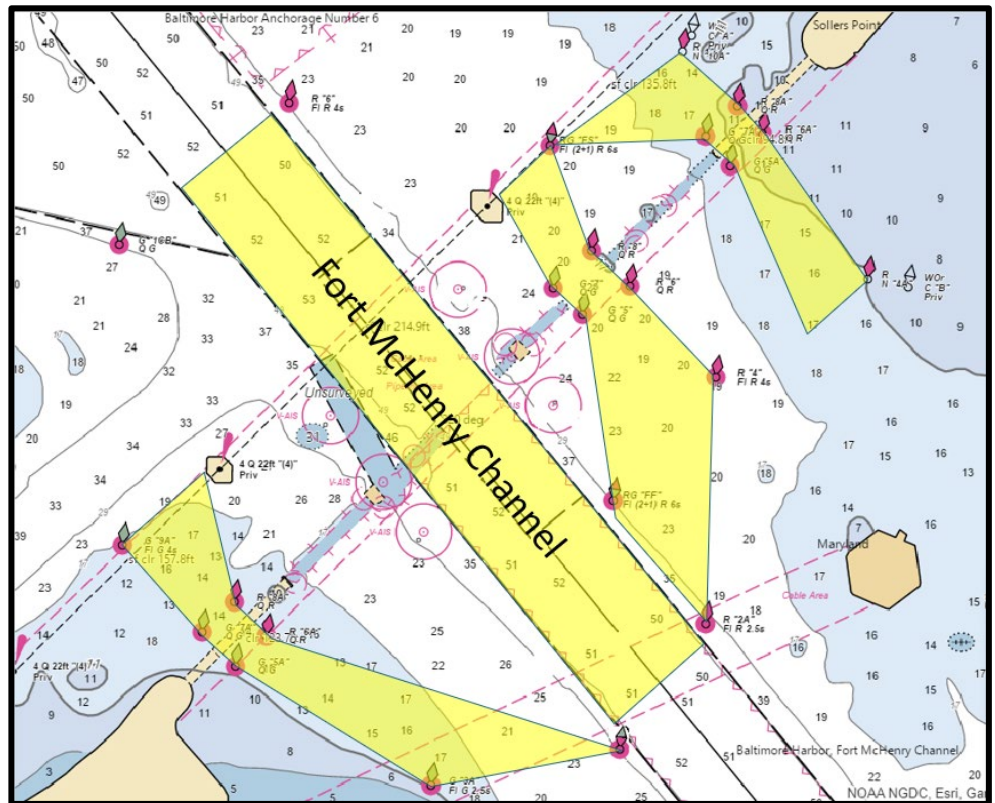
June 11, 2024

Port of Baltimore Safety Zone – Francis Scott Key Bridge Fort McHenry Channel and Temporary Alternate Channels

**** This cancels MSIB 050-24 ****

Fort McHenry Channel: The Captain of the Port (COTP) has reopened the Fort McHenry Channel to commercial vessel traffic for 24-hour availability. This channel has been fully restored to its original depth of 50 ft, 700-ft horizontal clearance, and a vertical clearance of 214 ft due to the adjacent BG&E powerlines.

Tug escorts are at the discretion of the attending pilot until all salvage operations are complete within the area. The Temporary Alternate Channels remain open and available for use until June 30th, which is the approximate conclusion of all on water salvage and survey operations relating to the Key Bridge Response.



Temporary Alternate Channels:

Fort Carroll Temporary Alternate Channel remains open 24-hours daily to non-deep draft commercial vessels with a controlling depth of 20 ft, a 300-ft horizontal clearance, and vertical clearance of 135 ft.

Hawkins Point Temporary Alternate Channel remains open 24-hours daily to non-deep draft commercial vessels with a controlling depth of 14 ft, a 280-ft horizontal clearance, and vertical clearance of 124 ft.

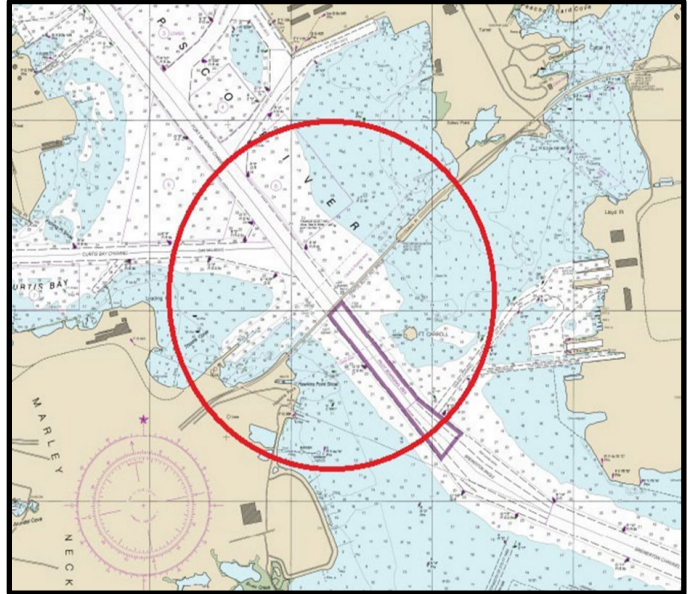
Sollers Point Temporary Alternate Channel remains open 24-hours daily to all traffic, to include recreational vessels, with a controlling depth of 11 ft, a 264-ft horizontal clearance, and vertical clearance of 95 ft.

UPDATE 1 – MARINE SAFETY INFORMATION BULLETIN 052-24 – UPDATE 1

June 11, 2024

**Port of Baltimore Safety Zone – Francis Scott Key Bridge
Fort McHenry Channel and Temporary Alternate Channels**

Francis Scott Key Bridge Safety Zone: The safety zone identified in [33 CFR §165.89](#) established for all navigable waters of the Chesapeake Bay within a 2,000-yard radius of the Francis Scott Key Bridge remains in effect and is intended to protect personnel, vessels, and the marine environment. Except for vessels transiting in one of the four marked channels, no vessel or person will be permitted to enter the safety zone without first obtaining permission from the Captain of the Port (COTP).



- The Maryland Pilots will continue their regular coordination of deep draft traffic and are available at (410) 342-6013.
- All vessels transiting the safety zone must remain within the marked channels and well clear of vessels engaged in salvage and safety operations.
- Over the next week, there will be times when pilots will need to coordinate ship movements with the salvors, similar to their management of regular dredge work within or near a federal channel.

The most current U.S. Army Corps of Engineers hydrographic survey data is available on the internet at [eHydro](#).

Baxter B. Smoak

**BAXTER B. SMOAK
COMMANDER, U.S. COAST GUARD
USCG SECTOR MARYLAND-NCR**