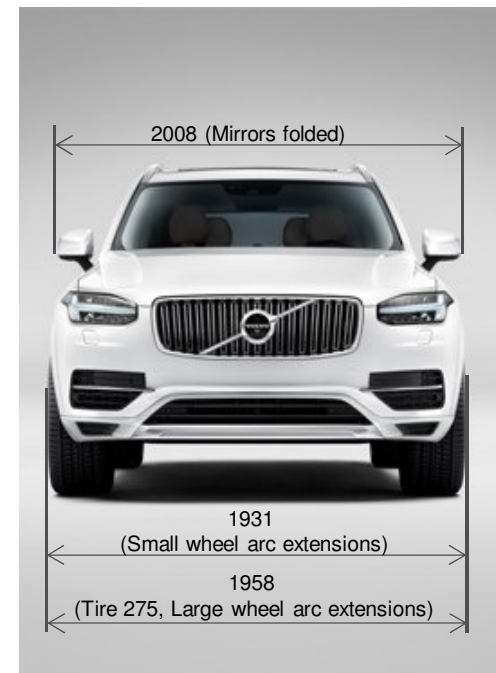
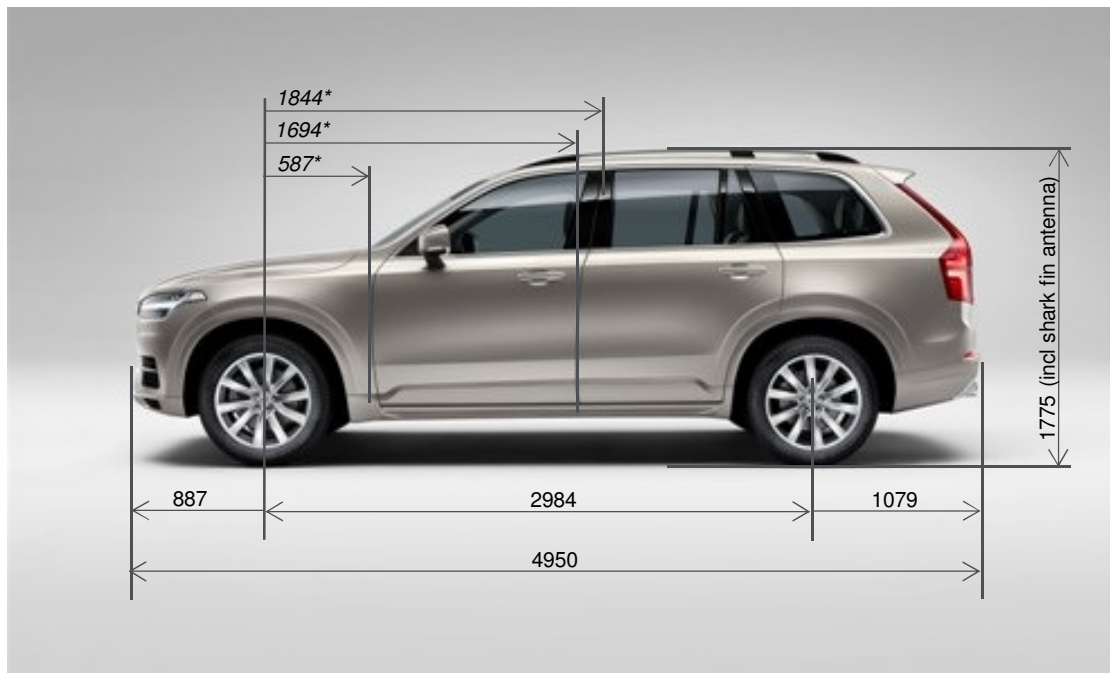


NEW VOLVO XC90

**INFO FOR CARREIRS
AND LOGISTICS
SERVICE PROVIDERS**

XC90 DIMENSIONS,



- **) Measurements in italic are approximations.*
- Pictures are only for illustration and are not scalable.

TO START AND SWITCH OFF THE ENGINE



STARTING AND SWITCHING OFF THE ENGINE

The remote control key is not used physically during starting because the car is equipped with support for keyless starting (Passive start) as standard.

Starting

1. Depress the brake pedal
2. Turn the ignition dial to START and release it. The control automatically returns to its starting position.

Switching off

- Turn the ignition dial to STOP and release it. The control automatically returns to its starting position.



TO USE THE PARKING BRAKE

USE THE PARKING BRAKE

(P) Activate the parking brake

1. With the gear selector in position **P**, depress the brake pedal.
2. Pull the parking brake control in the tunnel console upward. A symbol in the driver display illuminates when the parking brake is activated.

Releasing manually

1. Depress the brake pedal.
2. Press the parking brake control down. The symbol in the driver display extinguishes when the parking brake has been released.

Disengage automatically

1. Put the seatbelt on.
2. Start the engine and depress the brake pedal.
3. Move the gear selector to position **D** or **R** and depress the accelerator pedal. The symbol in the driver display extinguishes when the parking brake has been released.



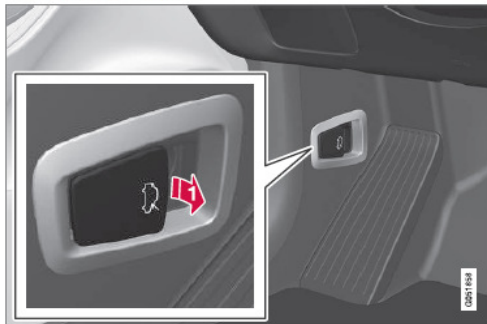
OPENING THE BONNET



Opening and closing the bonnet

The bonnet can be opened using the handle in the passenger compartment and a handle under the bonnet.

Open the bonnet



- ➔ Pull the handle near the foot pedals to release the bonnet from its fully closed position.



- ➔ Turn the handle under the bonnet anticlockwise to release the bonnet from the lock catches and lift the bonnet.

Close the bonnet

1. Push the bonnet down until it starts to fall from its own weight.
2. When the bonnet stops against the lock catch, push the bonnet to close it completely.

⚠ WARNING

Risk of crushing! Ensure that the closing path under the bonnet is not obstructed, otherwise there is a risk of personal injury.

⚠ WARNING

Check that the bonnet locks properly when closed. The bonnet must engage at both sides audibly.



BATTERY INFORMATION, JUMP STARTING

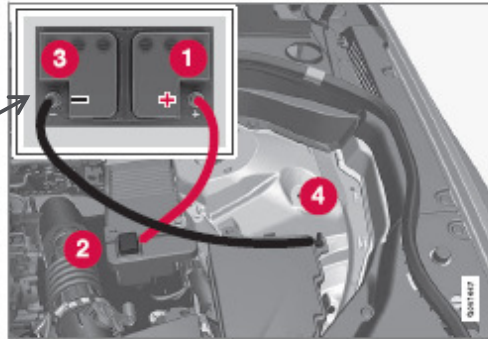


Note:
Never use another transported new Volvo car as the 12V donor battery.
If gear selector is locked, see page "GEAR SELECTOR" for instructions.

External jump starting battery/jump starter

Using jump starting with another battery

If the starter battery is discharged then the car can be started with current from another battery.



When jump starting the car, the following steps are recommended to avoid short circuits or other damage:

1. Set the car's electrical system in ignition position **0**.
2. Check that the donor battery has a voltage of 12 V.
3. If the donor battery is installed in another car - switch off the donor car's engine and make sure that the two cars do not touch each other.

Back to ignition position 0 - To return to ignition position **0** from position **I** and **II** - Turn the ignition dial to **STOP** and release it. The control automatically returns to its starting position.

4. Connect one of the red jump lead's clamps to the donor battery's positive terminal (1).

! IMPORTANT

Connect the start cable carefully to avoid short circuits with other components in the engine compartment.

5. Open the positive jump-starting point's cover (2).
6. Connect the red jump lead's other clamp onto the car's positive jump-starting point (2).
7. Connect one of the black jump lead's clamps to the donor battery's negative terminal (3).
8. Connect the black jump lead's other clamp onto the car's negative jump-starting point (4).
9. Check that the jump lead clamps are affixed securely so that there are no sparks during the starting attempt.
10. Start the engine of the "donor car" and allow it to run a few minutes at a speed slightly higher than idle approx. 1500 rpm.

11. Start the engine in the car with the discharged battery.

! IMPORTANT

Do not touch the crocodile clips during the start procedure. There is a risk of sparks forming.

12. Remove the jump leads in reverse order - first the black and then the red.

Make sure that none of the black jump lead's clamps comes into contact with the car's positive jump-starting point/donor battery's positive terminal or the clamp connected to the red jump lead.

! WARNING

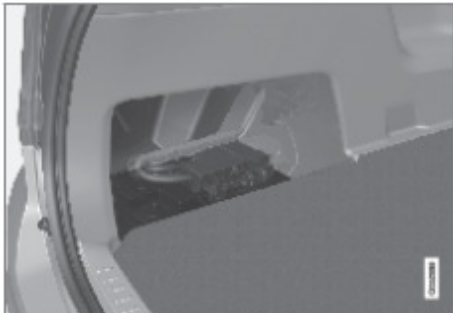
- The battery can generate oxyhydrogen gas, which is highly explosive. A spark can be formed if a jump lead is connected incorrectly, and this can be enough for the battery to explode.
- The battery contains sulphuric acid, which can cause serious burns.
- If sulphuric acid comes into contact with eyes, skin or clothing, flush with large quantities of water. If acid splashes into the eyes - seek medical attention immediately.

BATTERY INFORMATION, CHARGING



Start battery

The start (main) battery is used to power the starter motor and other electrical components and systems.



The start battery is located in the cargo compartment

Support battery

In addition to the start battery, vehicles equipped with Start/Stop also have a support battery that provides extra current during the Start/Stop function's start sequence.



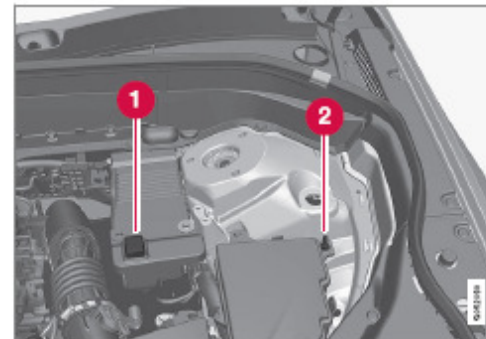
The support battery is located in the engine compartment, under the circuit breakers

Charging

When connecting an external starter battery or battery charger, use the car's charging points in the engine compartment. The battery terminals on the car's starter battery in the cargo area must **not** be used.

! IMPORTANT

During charging, both the starter battery and the support battery are charged.



- 1 Positive charging point
- 2 Negative charging point

! IMPORTANT

When charging the starter battery and the support battery, only use a modern battery charger with controlled charging voltage. Fast charging function must not be used since it may damage the battery.

AIR SUSPENSION



AIR SUSPENSION IS OPTIONAL EQUIPMENT

During distribution process the Air Suspension will be set to a "transportation level" which is approx 50mm lower than the normal ride height. The transportation level will be set from plant.

It is not possible to change the ride height from the "transportation level" during the distribution process. Change can only be done by Volvo authorized technician.

TRANSPORT MODE



- Cars are in Transport Mode in the distribution process to reduce battery consumption.
- Transport Mode is indicated by a message in the DIM-panel when the door is opened and DIM lightens up, see picture.



GEAR SELECTOR

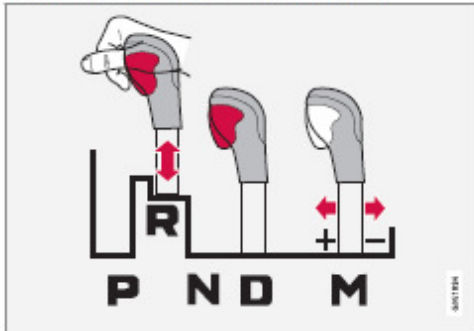


Gear selector inhibitor

The gear selector inhibitor prevents accidental changing between different gear positions in an automatic gearbox.

There are two different types of gear selector inhibitor - mechanical and automatic.

Mechanical gear selector inhibitor



The gear selector can be moved forward and back freely between **N** and **D**. Other positions are locked with a latch that is released with the inhibitor button on the gear selector.

With the inhibitor button depressed the lever can be moved forwards or backwards between **P**, **R**, **N** and **D**.

Automatic gear selector inhibitor

The automatic gear selector inhibitor has special safety systems.

From park position - P

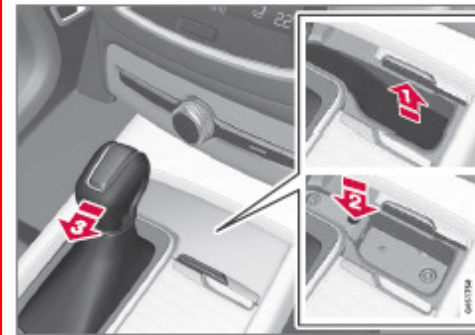
To be able to move the gear selector from the **P** position, the brake pedal must be depressed and the ignition position must be **II**.

From neutral position - N

If the gear selector is in the **N** position and the car has been stationary for at least 3 seconds (irrespective of whether the engine is running) then the gear selector is locked.

To be able to move the gear selector from the **N** position to another gear position, the brake pedal must be depressed and the ignition position must be **II**.

Deactivate automatic gear selector inhibitor



If the car cannot be driven, e.g. due to a discharged battery, the gear selector must be moved from the **P** or **D** position so that the car can be moved.

- 1 Lift the rubber mat in the compartment in front of the gear selector. Locate the hole with a spring-loaded button in the bottom of the compartment.
- 2 Press a small screwdriver into the hole and hold.
- 3 Move the gear selector to position **N** and release the button.
- 4 Put the rubber mat back in place.