

To : Logistic team of MAZDA GROUP  
CC: Technical Information Gr. MAZDA



APR/09/2016

Vehicle Logistic Dept.

## Handling Manual for CX-9

### 1.General Information

- 1-1. Specification
- 1-2. General Notes

### 2.Vessel Operation

- 2-1. Unlashing
- 2-2. Passing the Ramp Way

### 3.Trailer Opertaion

- 3-1. Loading and unloading
- 3-2. Tie Down

This information has been released to advise you of handing precaution  
for the 2016 CX-9 to prevent from possible damage to the vehicle in transit

## 1. General Information

### 1-1. Specifications

The data which is shown on the table may vary based on the specification.

Specification		NEW	Current
Weight GVWR(2WD/AWD)	kg	2,568 / 2,638	2,568 / 2,638
Overall Length	mm	5,073	5,095
Overall width	mm	1,969	1,936
Overall height	mm	1,758	1,728
Wheel Base	mm	2,930	2,875
Tread (Front/Rear)	mm	1,663 / 1,663	1,654 / 1,644
FOH/ROH	mm	1,032 / 1,136	1,088 / 1,132
Min.Ground Clearance	mm	279	260 - 270
Approach Angle	Deg.	17.5	18.0
Departure Angle	Deg.	20.0	20.0
Tire		255/50R20 or 255/60R18	245/60R18 or 245/50R20

### 1-2. General Notes

#### (1) Body type

- There is one body types, "5DOORS-HATCHBACK".

#### (2) Large Vehicle Size

- Be careful of handlings especially in vessel, trailer, and train because CX-9 is the largest size in Mazda carline.

(NOTE ):IMPORTANT notice for cars equipped with Automatic Transmission:

Move the shift lever always in "P" prior to stop the engine. (Same procedure as for CX-5, MZ6, MZ3, MZ2).

The above procedure for Automatic Transmission equipped cars is essential to keep the battery alive.

## 2. Vessel Operation

### 2-1. Unlashing

Your special attention is requested to prevent scratching on the bumper (especially around eyebolt and bracket).

#### Lashing points

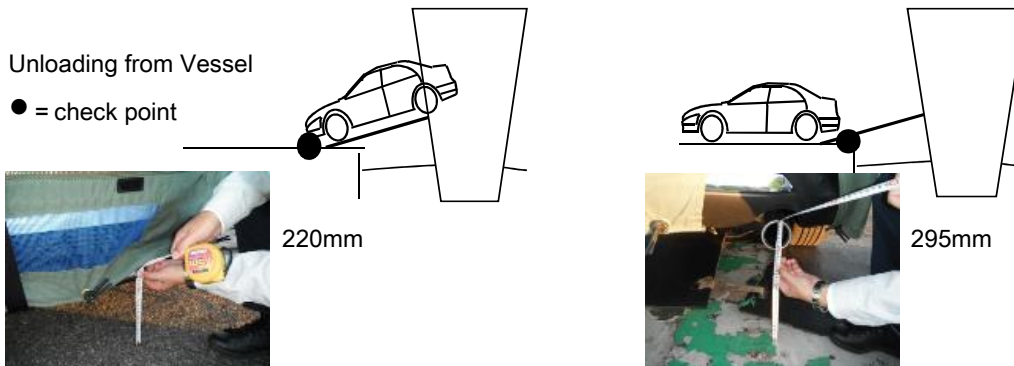
- Front : Bumper, Eyebolt type (1 point)
  - Rear : Bumper, Eyebolt type (2points)
- The front grille is large and the spacing between the front grille and eye bolts is narrow. Therefore, be careful the hook does not hit the front grille when you apply or remove the hook for lashing to eyebolt.



#### **(NOTE) : Unlashing operation**

- Don't hit the hook against the bumper.
- Wear the suitable working clothes and do not expose projections, such as fastener, in order not to scratch the vehicle body.
- Squat down with knee on the floor in order to keep stable posture.

### 2-2. Passing the Ramp Way

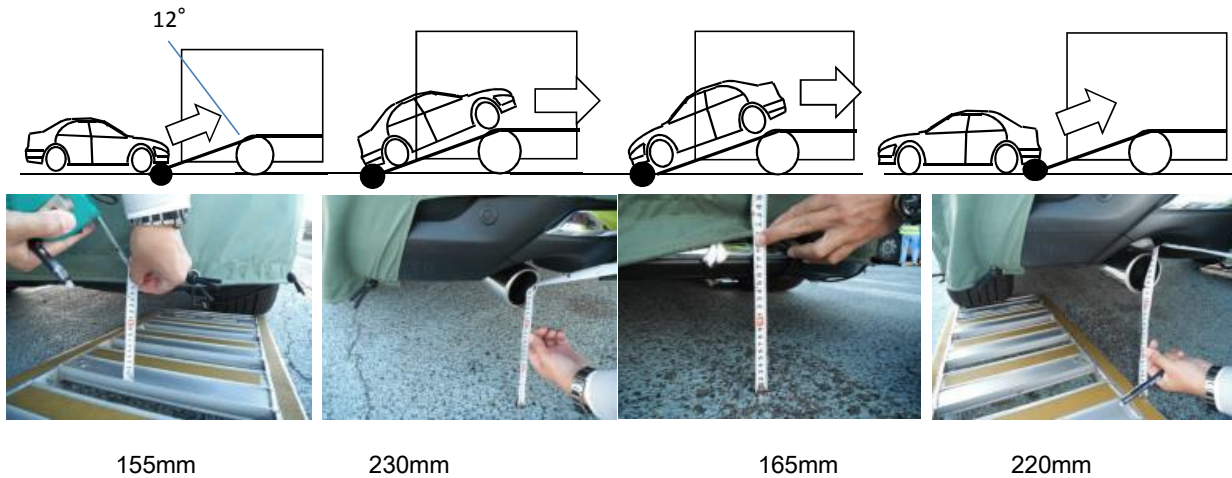


- (1) Drive less than 20km/h when passing through the lower side of the inner slopes and shore ramp ways.
- (2) Use rubber mats on the edge of ramp if nose/underbody striking is anticipated.
- (3) Please set steel plates at the end of the shore ramp flap.
- (4) Check the shore ramp angle and ensure the angle is as small as practicle.

### 3. Trailer Operation

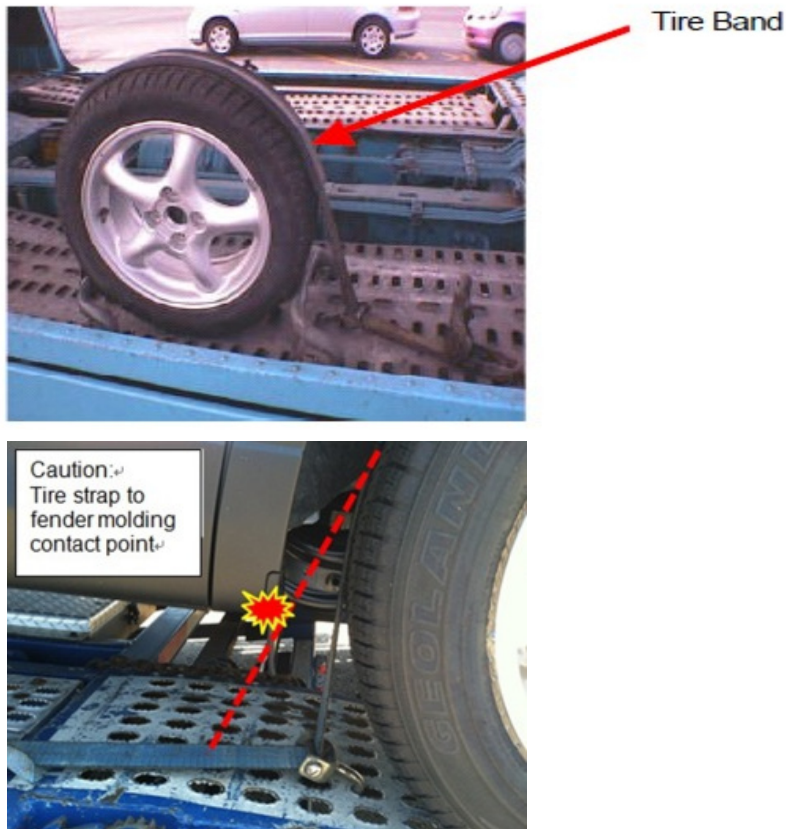
#### 3-1. Loading and Unloading

Please see the pictures below. Your special attention is requested to prevent from possible Nose/Underbody striking during the loading and unloading operation.

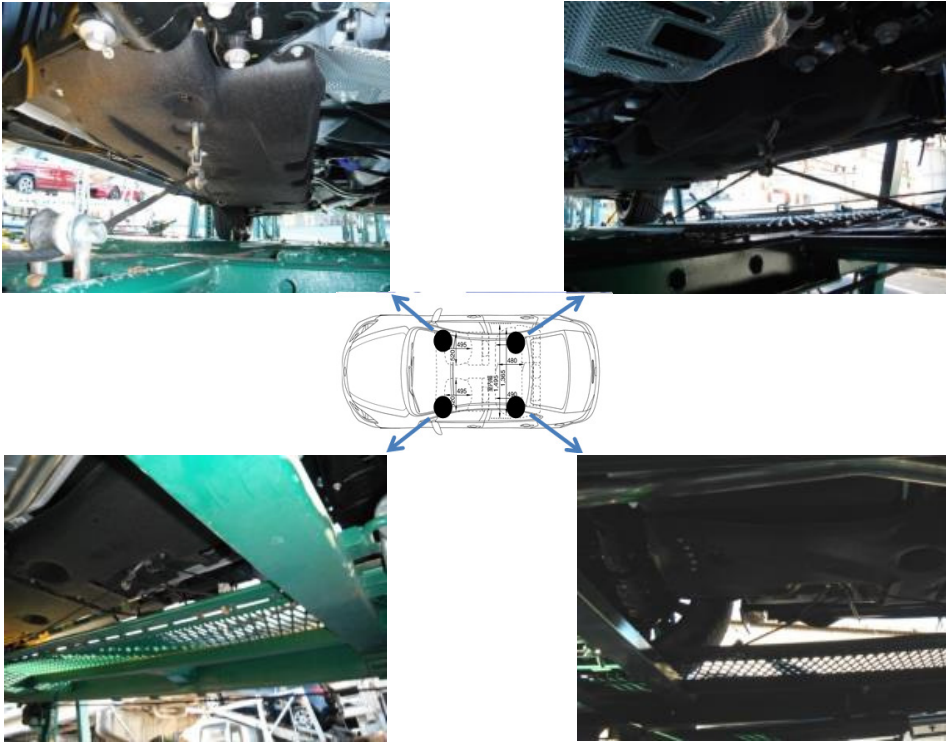


#### 3-2. Tie Down

(1) Secure the vehicle with tire bands as shown in the picture.



(2) If tire bands are not available, use tie-down holes as shown in the following pictures



**(NOTE)** Do not use the eyebolt and the rear bracket for trailer transportation. This may result in damage to the eyebolt and the rear bracket. For trailer transportation, there are four tie-down holes available underneath of the vehicle as shown above. Please instruct your truck drivers not to use the eyebolt and the rear bracket for securing in trailer.