

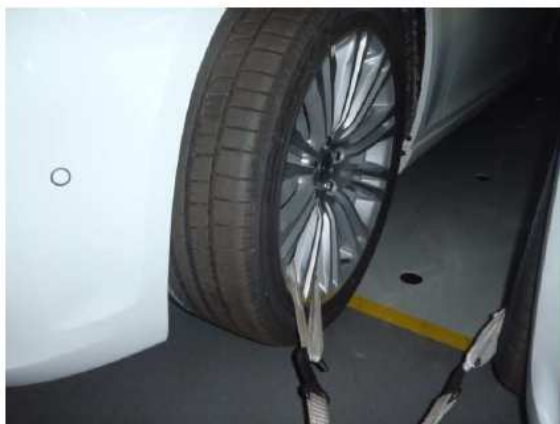
This form outlines the mandatory handling, loading and securing standards for safety and damage free handling when transporting these vehicles by ocean. There is a HIGH potential for vehicle damage if this Standard Operating Procedure (SOP) for Loading and Securing is not followed.



Guidelines for Ocean Transport:

- A stop condition is required when either entering the ramp or off loading and grounding the unit.
- **SLOW** speed is essential when loading and unloading if damage is to be avoided to undercarriage/front fascia as this is a low clearance vehicle.
- Do not lean on or touch unit while securing on vessel.
- Do not carry anything which may cause damage to the units while loading.

Wheel lash in front



Fixed loop in rear

